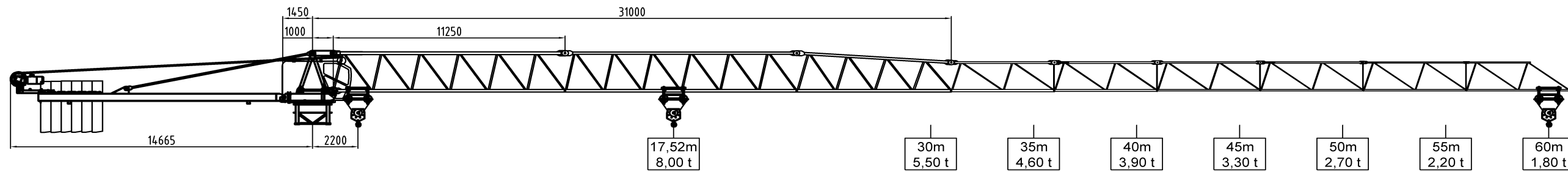


# AK 150.8 - 8,0 ton

Tower S 16  
Tower M 15/14

2 fall rope



Radius & Capacity												
Jib m	max load		Jib radius									
	t	m	15	20	25	30	35	40	45	50	55	60
60,0	8,00	17,5	8,00	6,89	5,34	4,32	3,60	3,05	2,63	2,30	2,03	<b>1,80</b>
55,0	8,00	18,6	8,00	7,38	5,73	4,64	3,87	3,29	2,85	2,49	<b>2,20</b>	
50,0	8,00	19,8	8,00	7,91	6,15	4,99	4,17	3,56	3,08	<b>2,70</b>		
45,0	8,00	20,9	8,00	8,00	6,55	5,33	4,45	3,80	<b>3,30</b>			
40,0	8,00	21,3	8,00	8,00	6,71	5,45	4,56	<b>3,90</b>				
35,0	8,00	21,5	8,00	8,00	6,76	5,50	<b>4,60</b>					
30,0	8,00	21,5	8,00	8,00	6,76	<b>5,50</b>						

Hoist 37 kW FI*							
m [t]	0,5	2,7	4,9	6,5	8,0	8,0	
	v [m/min]	94	59	40	29	21	2
Drum capacity	300 m						

Motor	5,5 kW FI	2 x 4,4 kW FI	4 x 3,0 kW
t/v	0-70 m/min	0,8 rpm	25,0 m/min
Power requirement Upper part	Hoist 37,0 kW		70 kVA

Jib (m)	Tower heights (m)			
	Standard Tower		Option 1	
	Foundation	Cross	Foundation	Cross
	S 16	FCS 16	M 15/14	FCM 15/14
30,0	42,0	34,5	54,0	55,1
40,0	42,0	34,5	54,0	55,1
50,0	36,0	31,5	51,0	52,1
55,0	36,0	31,5	51,0	52,1
60,0	36,0	31,5	51,0	52,1

Power requirement
400 V (±10%) - 50 Hz



EN 14439:2010
Wind C 25
ISO 9001:2008

Counter weight	
Block 1	6 x 3,15 t
Block 2	-
Total	18,9 t

Ropes		
	D (mm)	N/mm <sup>2</sup>
Hoist	16,0	1960
Trolley	8,0	1770

\* Further hoist models available